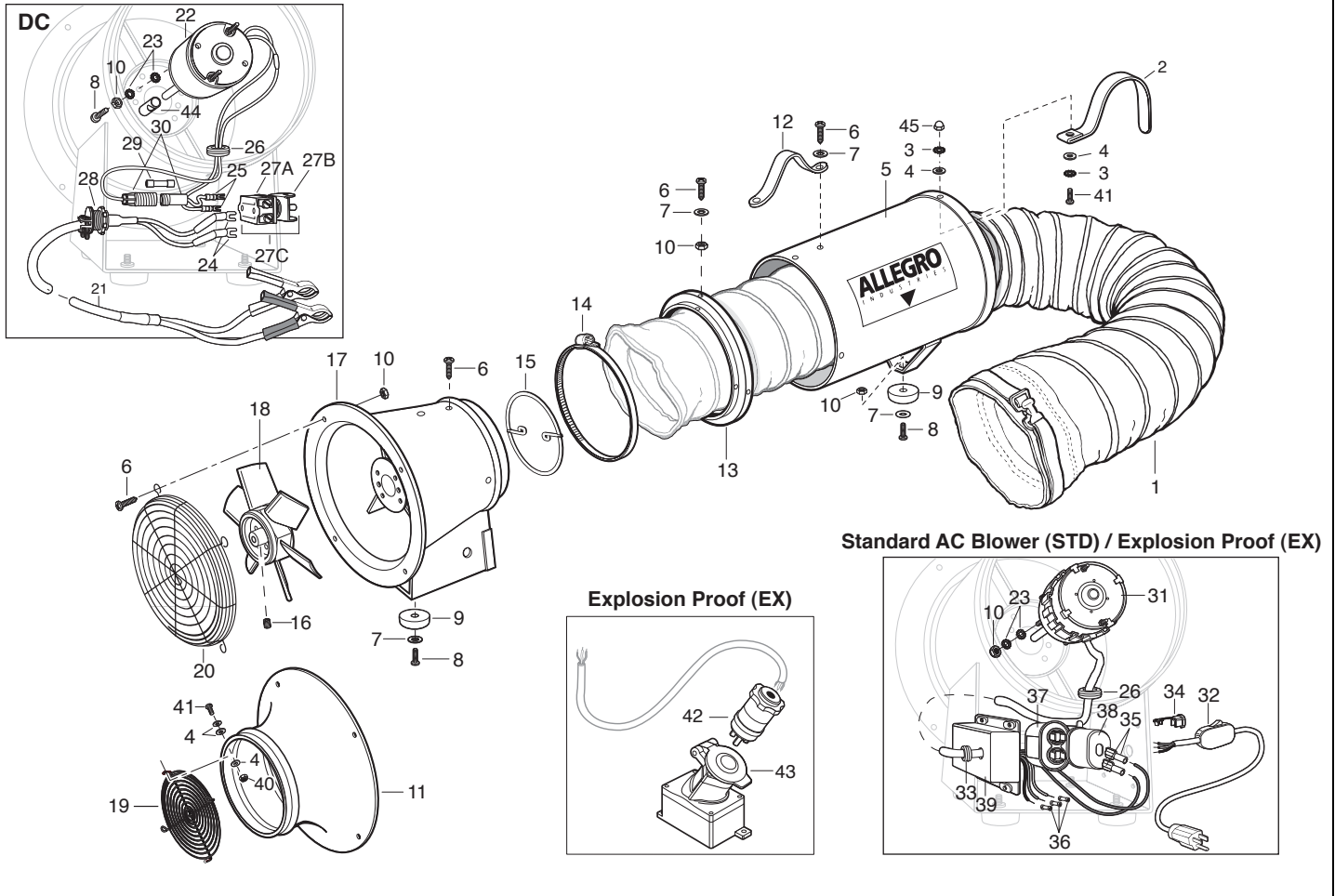


**AXIAL BLOWERS-AC (9513, 9513-05, 9514, 9514-05, 9514-06, 9514-25)  
 AXIAL BLOWERS-DC (9506, 9506-01, 9506-25)  
 AXIAL BLOWERS-EX (9513-05, 9514-05, 9514-06)  
 AXIAL INLINE BOOSTER BLOWERS-AC (9513-I), EX (9513-05I)**



| Key Part # | Description  | Key Part # | Description                           | Key Part # | Description  |
|------------|--|------------|---------------------------------------|------------|--|
| 9513       | AC Axial Blower (STD)  | 7          | 9500-63 Flat Washer                   | 27B        | 9865-14 Switch Guard   |
| 9513-05    | AC Axial EX Proof Blower   | 8          | 9500-75 Machine Screw                 | 27C        | 9865-13A Toggle Switch w/Guard                                   |
| 9514       | AC Axial w/Canister-15'  | 9          | 9505-06 Feet (Blower)                 | 28         | 9506-04 Cord, Strain Relief                                      |
| 9514-05    | AC Axial EX Proof Blower w/Canister-15'  | 10         | 9500-69 Nylon Lock Nut                | 29         | 9506-11 Fuse   |
| 9514-06    | AC Axial EX Proof Blower w/Canister-25'  | 11         | 9500-03A 8" Axial Intake Adapter      | 30         | 9506-42 Fuse Holder  |
| 9514-25    | AC Axial Blower w/Canister-25'   | 12         | 9513-07 Handle                        | 31         | 9513-03 1/3 HP Motor, STD<br>9513-03EX 1/3 HP Motor, EX (w/Cord) |
| 9506       | DC Axial Blower  | 13         | 9513-60 Canister Ring                 | 32         | 9512-02 Cord (STD)   |
| 9506-01    | DC Axial Blower w/Canister-15'   | 14         | 9514-01B Duct Clamp                   | 33         | 9513-13 Grommet  |
| 9506-25    | DC Axial Blower w/Canister-25'   | 15         | 9513-09 Motor Clamp                   | 34         | 9513-10 Cord, Strain Relief                                      |
| 9513-I     | AC Axial Inline Blower   | 16         | 9513-62 Set Screw                     | 35         | 9513-15 Female Disc.   |
| 9513-05I   | AC Axial EX Proof Inline Blower  | 17         | 9513-04 Chasis                        | 36         | 9513-14 Butt End Connector                                       |
| 1          | 9500-15A Ventilation Duct 15'<br>9500-25A Ventilation Duct 25'<br>9500-15AEX Static Conductive Duct 15'<br>9500-25AEX Static Conductive Duct 25' | 18         | 9513-01 Fan, STD<br>9513-01EX Fan, EX | 37         | 9513-63 Capacitor  |
| 2          | 9514-01C Strap w/Hook, Duct Retainer   | 19         | 9534-02 Fan Guard                     | 38         | 9513-64 Capacitor Boot   |
| 3          | 9500-71 Lock Washer  | 20         | 9513-02 Fan Guard                     | 39         | 9513-11 Capacitor Housing  |
| 4          | 9800-85 Flat Washer  | 21         | 9506-40 Power Cord (w/Clamps)         | 40         | 9800-87 Lock Nut   |
| 5          | 9514-01A Ducting Canister 15'<br>9514-02A Ducting Canister 25'   | 22         | 9506-10 Motor /DC 1/3 H.P.            | 41         | 9800-84 Screw  |
| 6          | 9800-66 Machine Screw  | 23         | 9500-71 Lock Washer                   | 42         | 9503-02 Plug, 20A/125V, EX (Sold Separately)                     |
|            |  | 24         | 9800-78 Yellow Spade                  | 43         | 9503-03 Receptacle, 20A/125V, EX                                 |
|            |  | 25         | 9500-94 Blue Spade                    | 44         | 9513-61 Retaining Sleeve   |
|            |  | 26         | 9513-12 Grommet                       | 45         | 9800-89 Acorn Nut  |
|            |  | 27A        | 9865-13 Toggle Switch                 |            |  |